

BI-LEVEL FLOAT VALVE

PN16 F6316-FBF
PN25 F6325-FBF



FEATURES & SPECIFICATIONS

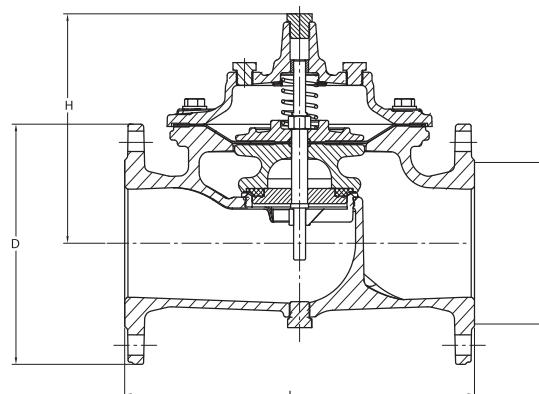
- Non-modulating type
- Accurate and repeatable level control
- Stainless steel rod & ball float
- Full bore globe pattern design for superior control characteristic
- Nylon reinforced diaphragm for long-lasting performance
- Durable fusion bonded epoxy coated
- Flange drilled to EN 1092-2 PN16 / EN 1092-2 PN25 / ANSI Class 150
- Design comply with EN 1074 -5

PRESSURE & TEMPERATURE RATINGS

Working Pressure	16bar	25bar
Shell Test Pressure (x1.5)	24bar	37.5bar
Seat Test Pressure (x1.1)	17.6bar	27.5bar
Working Temperature	-20°C ... 110°C (EPDM) -10°C ... 80°C (NBR)	
Suitable Media	Water	

MATERIAL SPECIFICATIONS

Part	Material	Standard
Body	Ductile Iron	EN-JS 1050
Bonnet	Ductile Iron	EN-JS 1050
Plug	Stainless Steel 304	AISI 304
Stem	Stainless Steel 304	AISI 304
Seat	Stainless Steel 304	AISI 304
Seat Retainer	Stainless Steel 304	AISI 304
Spring	Stainless Steel 304	AISI 304
Diaphragm	Nylon Reinforced Rubber	EPDM + Nylon Fabric
Seal Ring	Rubber	EPDM
O-Ring	Rubber	NBR

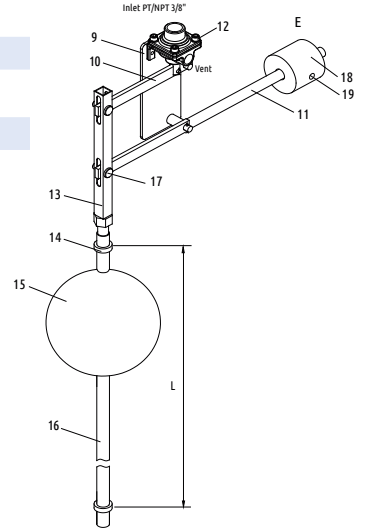
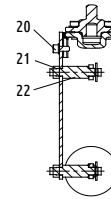
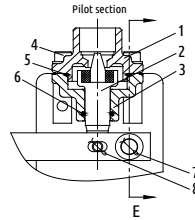


DIMENSIONS

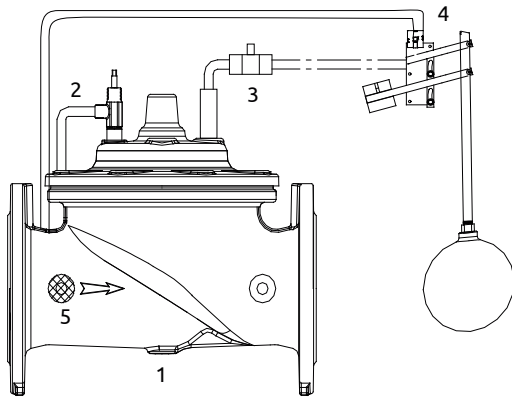
DN	(mm)	50	65	80	100	125	150	200	250	300	(mm)
	(inch)	2	2½	3	4	5	6	8	10	12	
L		230	290	310	350	400	480	600	730	850	
H		177	202	219	243	243	333	428	478	538	
D		165	185	200	220	250	285	340	405	460	
B		99	118	132	156	156	211	266	319	370	

PILOT VALVE SPECIFICATION

No.	Description	Material	No.	Description	Material
1	Bonnet	Stainless Steel 304	16	Low rod	Stainless Steel 304
2	Disc	Stainless Steel 304 + EPDM	17	Pin roll & split pin	Stainless Steel 304
3	Body	Stainless Steel 304	18	Weight	Stainless Steel 304
4	Bolt + Washer	Stainless Steel 304	19	Set screw	Stainless Steel 304
5	O-Ring	NBR	20	Nut + Washer	Stainless Steel 304
6	O-Ring	NBR	21	Nut	Stainless Steel 304
7	Split pin	Stainless Steel 304	22	Roller	Stainless Steel 304
8	Split pin	Stainless Steel 304			
9	Plate	Stainless Steel 304			
10	Bar 1	Stainless Steel 304			
11	Bar 2	Stainless Steel 304			
12	Screw	Stainless Steel 304			
13	Up rod	Stainless Steel 304			
14	Stop collar	Stainless Steel 304			
15	Float	Stainless Steel 304			



VALVE COMPOSITION



- 1 Main Valve
- 2 Needle Valve
- 3 Ball Valve
- 4 Bi-Level Float
- 5 Strainer

TYPICAL CONNECTION

